

# COVID-19 Update for Devens: December 22, 2020



## Effective 12/26/20: New Temporary Executive Order and revised COVID-19 measures:

To reduce the spread of the virus in MA, the Governor has issued a new temporary Executive Order that will take effect at 12:01 a.m. on Saturday, December 26<sup>th</sup> and will continue until Sunday, January 10<sup>th</sup>, with a possibility of an extension of another week based upon available data. This pause will reduce allowable occupancy from current capacity levels of 40% to 25% in multiple sectors:

- Notably, this capacity limit will now apply to restaurants. Capacity will be set at 25% of pre-COVID seating capacity and distancing between tables and other requirements will remain in place. Indoor and Outdoor seating capacity must be calculated separately (rather than combining them).
- Small spaces (such as personal services) and other spaces without clear occupancy standards may use 5 people / 1000 square feet as an alternative to the 25% occupancy .
- The 25% limit will not apply to manufacturing, laboratories, drive in movie theaters, or construction
- Employees/staff are exempted from the capacity count
- Limits at indoor event venues are being reduced to 10 people.
- Limits at outdoor event venues are being reduced to 25 people.
- Current limits at private residences remain the same (10 indoors and 25 outdoors)
- Limits at movie theaters will be reduced to 25% (no more than 50 people per theater)
- Limits outdoor performance venues will remain 25% (with the max number reduced to 25 from 50).
- Office spaces will be required to reduce capacity to 25%, but there will continue to be allowances for offices with “critical services”, such as public safety, public health, and other critical services. There is no approval required for these exemptions.
- K-12 schools continue to be exempted from these capacity limits and will need to follow DESE standards and guidelines.

| Sector  | Current Capacity Limit   | New Limit (12/26)  |
|---|--|--|
| Construction  | None   | None   |
| Drive-In Movie Theaters                                   | None   | None   |
| Laboratories  | None   | None   |
| Manufacturing   | None   | None   |
| Restaurants   | None   | 25% of seating capacity  |
| Close Contact Personal Services                           | None   | 25%  |
| Indoor and Outdoor Events                                 | 25 indoor / 50 outdoor   | 10 indoor / 25 outdoor   |
| Theaters and Performance Venues                           | Movie theaters – 40%, max 50 ppl<br>Indoor perf venues – Closed<br>Outdoor perf venues – 25%, max 50 ppl | Movie theaters – 25%, max 50 ppl<br>Indoor perf venues – Closed<br>Outdoor perf venues – 25%, max 25 ppl |
| Office Spaces   | 40%  | 25%  |
| Places of Worship   | 40%  | 25%  |
| Retail Businesses   | 40%  | 25%  |
| Driving and Flight Schools                                | 40%  | 25%  |
| Golf Facilities   | 40%  | 25%  |
| Libraries   | 40%  | 25%  |
| Operators of Lodgings                                     | 40%  | 25%  |
| Arcades & Other Indoor & Outdoor Recreation Businesses    | 40%  | 25%  |
| Fitness Centers and Health Clubs                          | 40%  | 25%  |
| Museums / Cultural & Historical Facilities / Guided Tours | 40%  | 25%  |
| Sectors Not Otherwise Addressed                           | 40%  | 25%  |

**Vaccine Update for Massachusetts\*:** As of Friday, December 18, 2020, COVID-19 vaccine began arriving in Massachusetts; the first vaccine recipients - hospital health care workers - began to receive COVID-19 vaccination; and the Moderna vaccine received federal approval for use including the official Emergency Use Authorization (EUA) from the FDA which will add to the amount of vaccine available for distribution in Massachusetts, beginning the week of 12/21. Vaccine distribution in MA will occur in a phased approach:

The timeline reflects several priorities: protecting our most vulnerable, maintaining health care system capacity, and addressing inequities in health care access and COVID-19 burden. View the administration's vaccine website: [www.mass.gov/COVIDvaccine](http://www.mass.gov/COVIDvaccine) for more information.

## ADDITIONAL UPDATES AND RESOURCES:

### Quarantine and Isolation Tips to make COVID-19

**isolation and quarantine easier:** The State Department of Public Health has developed guidelines and information about what to do and not to do while you are in quarantine or isolation. [View the guidance information here](#) .

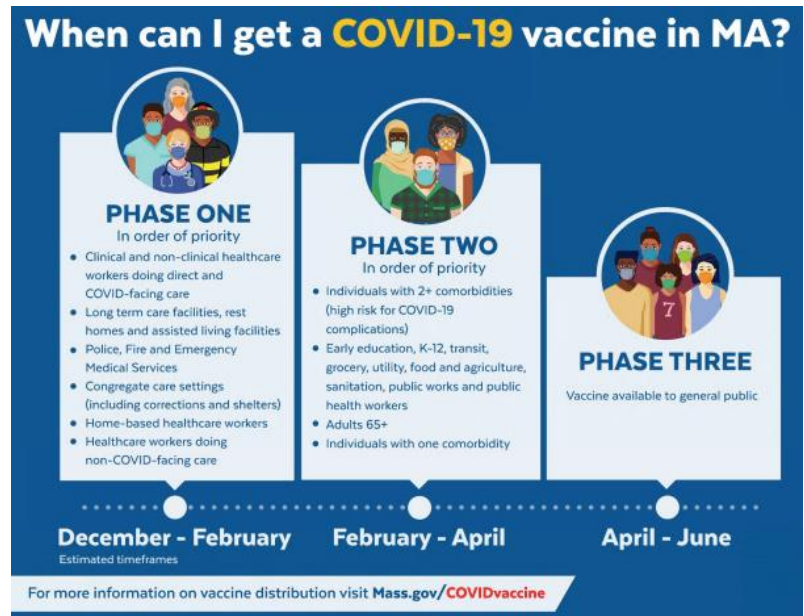
**Stay-At-Home Advisory Remains in Effect:** All residents of Massachusetts are advised to stay home between the hours of 10pm and 5am.

**Holiday Shopping Workplace Safety Standards:** The MA Department of Labor Standards has provided a reminder to retailers of the need to maintain required COVID-19 safety measures during the holiday shopping season. [This advisory](#) highlights some common questions and complaints related to increased customer volumes during the holiday shopping season. Shoppers should be aware of these requirements as well to stay safe.

**Employer Responsibilities During COVID-19 Pandemic:** The State office of Housing and Economic Development has issued a [letter to Employers](#) to reinforce employer responsibilities during this crisis. It is critical for employers to be aware of their role and responsibilities for dealing with employees that have tested positive and to work with local health departments for contact tracing purposes.

**Importance of proper ventilation in buildings:** Viruses spread indoors at a much higher rate as evident by the current spikes in COVID-19 cases in MA and throughout the US and the world. Studies show that better ventilation in buildings and throughout the work environment can help improve occupant comfort and productivity but it can also help reduce the spread of air-borne viruses like COVID-19. Employers should review their existing heating, ventilation, and air conditioning (HVAC) systems to ensure they are operating properly and have the proper filtration in place. OSHA has published a [guidance document building owners and managers](#)

**COVID-19 Financial Support for Small Businesses:** Resources and information for funding available to small businesses hardest hit by the COVID-19 pandemic, as well as workforce training efforts, can be found [here](#).



## HAVE A SAFE AND HAPPY HOLIDAY.

The Devens Enterprise Commission (DEC), acting in its capacity as the local Board of Health for Devens, continues to monitor the situation in Devens in collaboration with the Nashoba Associated Boards of Health, the Devens Public Safety Officer (Devens Fire Chief Tim Kelly), and MassDevelopment. **For immediate questions and concerns, residents and businesses can dial 2-1-1.** Any Questions for the DEC can be directed to 978.772.8831.